

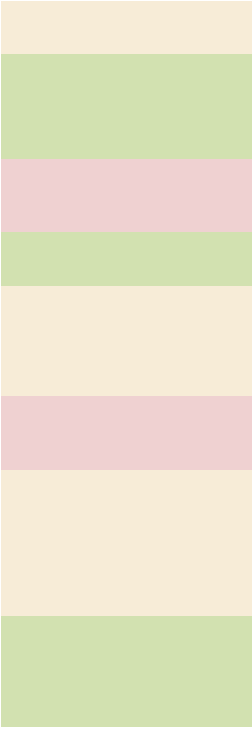


# Proposed Criteria and Metric

Criteria	Metric
<b>19 Priority Sites</b>	
Functionality Score	Darden/iep2 assessment score
Seismic Needs	Seismic Report Priority updated for critical needs projects
Age of School	Age of the main permanent building
Physical Condition	Darden/iep2 assessment score
% of black/brown youth and % of students	



# Proposed Weighting



## Next Steps

Priority School  
Rebuild / Full Modernization  
Projects

District Wide Initiatives  
-Air Quality & Thermal  
Comfort  
-Technology

Student Housing Needs  
-Accommodation for new  
programs  
-Addressing areas which  
are over capacity